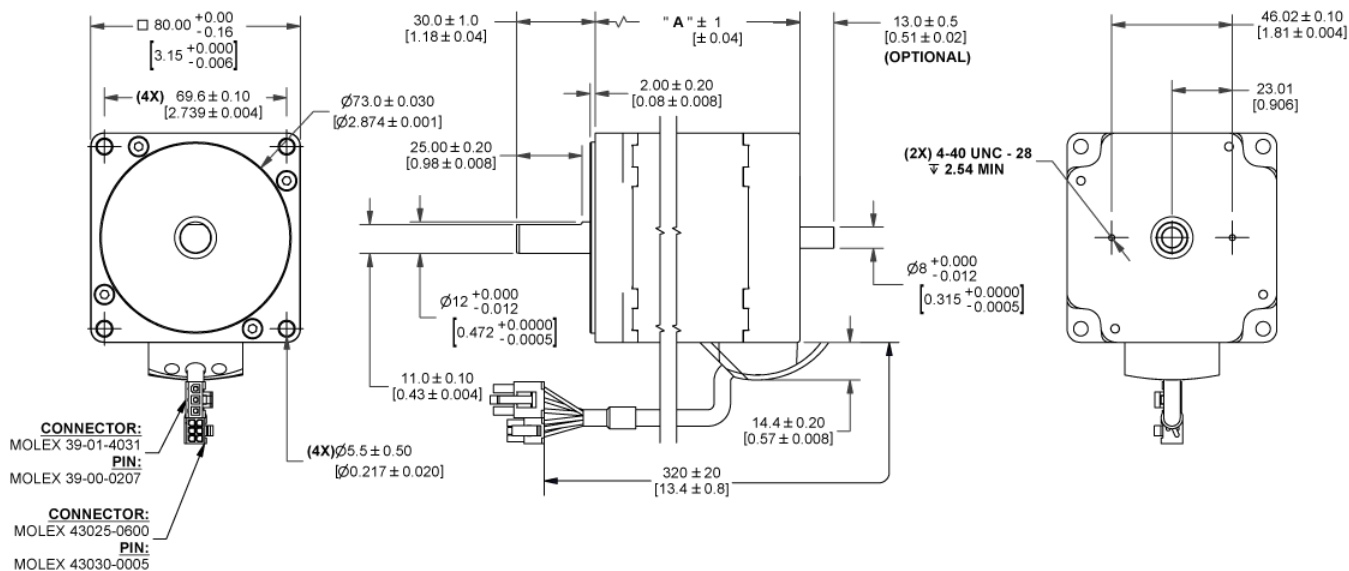




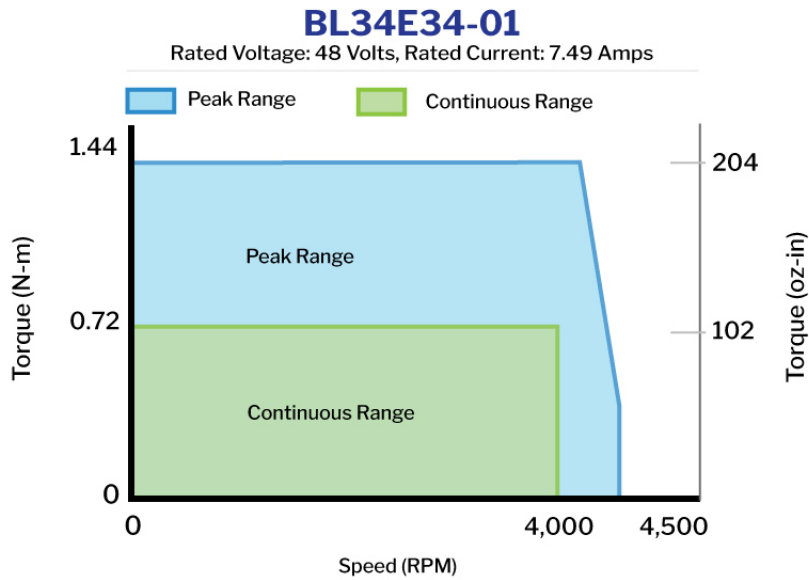
MOTOR SPECIFICATIONS

Part Number	BL34E34-01-R0
Dimension "A" Max	3.35 in [85mm]
Rated Voltage	48 VDC
Rated Torque	101.96 oz-in [0.72N-m]
Rated Speed	4000 RPM
Rated Power	300 Watts
Rated Current	7.49 Amps
Peak Torque	204 oz-in [1.44N-m]
Peak Current	14.98 Amps
Torque Constant (kt)	13.59 oz-in/Amp
Back EMF Constant (Ke)	9.91 Vp/KRPM
Motor Constant (Km)	30.4 oz-in/√W [0.215 N-m/√W]
Resistance	0.2 Ohms
Inductance	0.47 mH
Rotor Inertia	5.9 oz-in ²
Weight	5.64 lb [2.56 kg]
Electrical Time Constant	2.4 ms
Mechanical Time Constant	2.4 ms

DIMENSIONS



PERFORMANCE CURVE

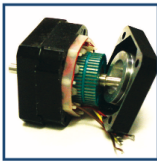


PIN OUT CHARTS

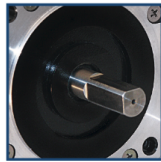
PIN #	COLOR	PHASE
1	RED	VCC (+5V)
2	YELLOW	HV
3	BLUE	HW
4	BLACK	GND
5	ORANGE	HU

PIN #	COLOR	PHASE
1	BLUE	W
2	ORANGE	U
5	YELLOW	V

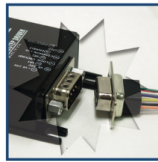
OPERATION & USAGE TIPS



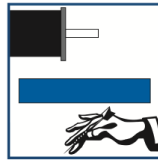
Do not disassemble motors; a significant reduction in motor performance will occur.



Do not machine shafts; this will have a negative effect on shaft run out and perpendicularity.



Do not disconnect motor from drive while in operation.



Do not use holding torque/detent torque of motor as a fail safe brake.



Do not hold motor by lead wires.



Do not exceed the rated current; this will burn the motor.

FAILURE TO COMPLY WITH THESE RECOMMENDATIONS WILL VOID ALL WARRANTY TERMS

Motion Control, **Solved.**

MOTOR ENGINEERING & MANUFACTURING



Optimized
For Your
Application



Quick
Prototype
Turnaround



Small Batch
to OEM Volume
Production



US Based
Support &
Manufacturing