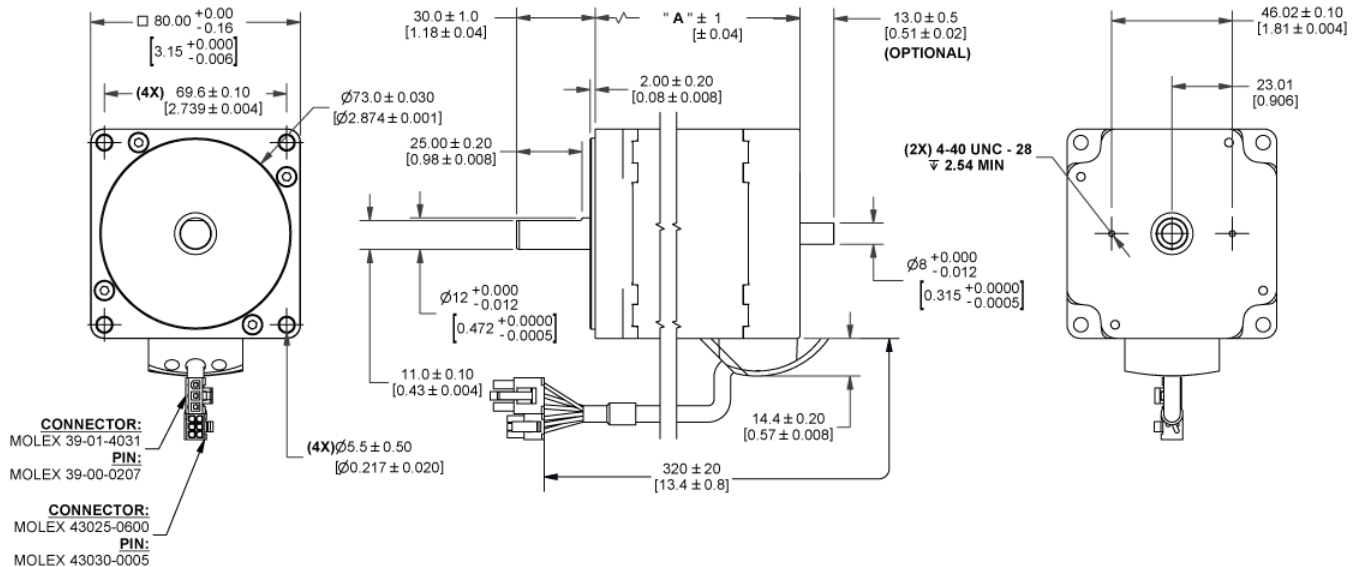




MOTOR SPECIFICATIONS

Part Number	BL34E21-02D-RO
Dimension "A" Max	2.01 in [51mm]
Rated Voltage	48 VDC
Rated Torque	33.99 oz-in [0.24N-m]
Rated Speed	4000 RPM
Rated Power	100 Watts
Rated Current	2.43 Amps
Peak Torque	68 oz-in [0.48N-m]
Peak Current	4.86 Amps
Torque Constant (kt)	14.02 oz-in/Amp
Back EMF Constant (Ke)	9.7 Vp/KRPM
Motor Constant (Km)	16.64 oz-in/ \sqrt{W} [0.118 N-m/ \sqrt{W}]
Resistance	0.71 Ohms
Inductance	1.35 mH
Rotor Inertia	2.08 oz-in ²
Weight	2.16 lb [0.98 kg]
Electrical Time Constant	1.9 ms
Mechanical Time Constant	2.9 ms

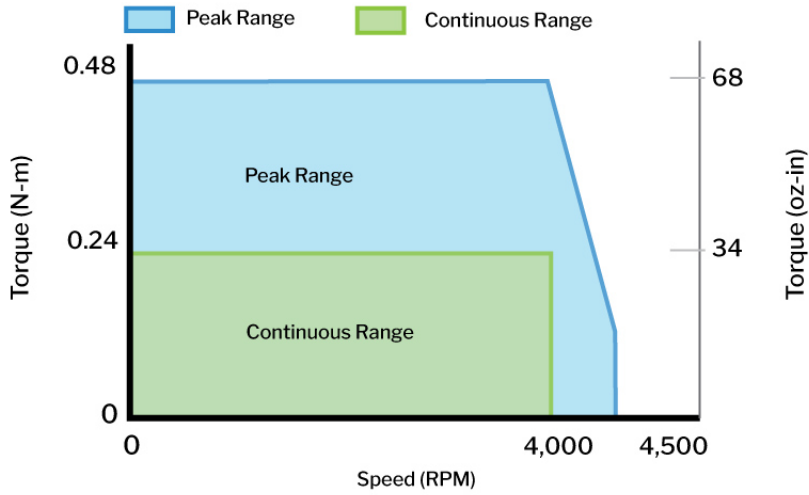
DIMENSIONS



PERFORMANCE CURVE

BL34E21-02

Rated Voltage: 48 Volts, Rated Current: 2.43 Amps

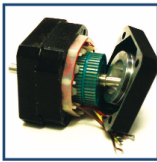


PIN OUT CHARTS

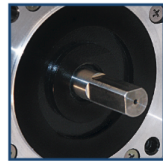
PIN #	COLOR	PHASE
1	RED	VCC (+5V)
2	YELLOW	HV
3	BLUE	HW
4	BLACK	GND
5	ORANGE	HU

PIN #	COLOR	PHASE
1	BLUE	W
2	ORANGE	U
5	YELLOW	V

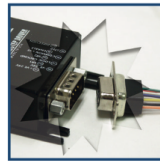
OPERATION & USAGE TIPS



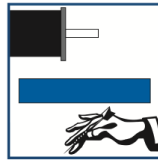
Do not disassemble motors; a significant reduction in motor performance will occur.



Do not machine shafts; this will have a negative effect on shaft run out and perpendicularity.



Do not disconnect motor from drive while in operation.



Do not use holding torque/detent torque of motor as a fail safe brake.



Do not hold motor by lead wires.



Do not exceed the rated current; this will burn the motor.

FAILURE TO COMPLY WITH THESE RECOMMENDATIONS WILL VOID ALL WARRANTY TERMS

Motion Control, **Solved.**

MOTOR ENGINEERING & MANUFACTURING



Optimized For Your Application



Quick Prototype Turnaround



Small Batch to OEM Volume Production



US Based Support & Manufacturing