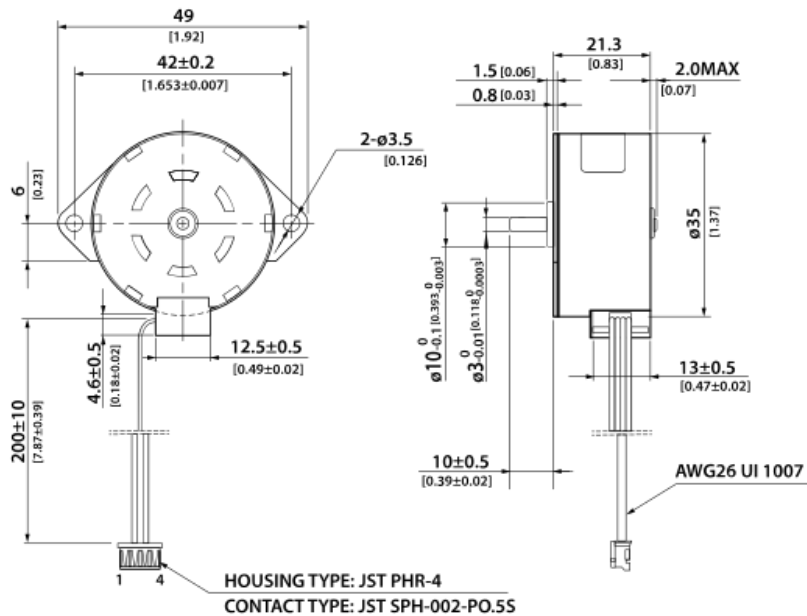


## MOTOR SPECIFICATIONS



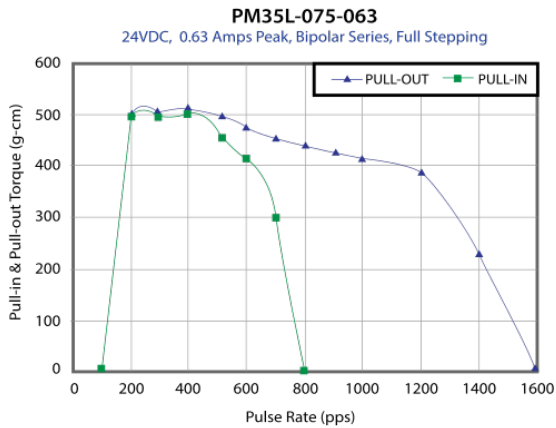
|                          |                      |
|--------------------------|----------------------|
| Part Number              | <b>PM35L-075-063</b> |
| Rate Voltage             | 24                   |
| Constant Current         | 0.63A/Phase          |
| Phase Number             | 2                    |
| Step Angle               | 7.5°                 |
| Excitation Method        | Bipolar Full-Step    |
| Insulation Class         | Class B              |
| Resistance per Phase     | 5.3Ω ± 10%           |
| Inductance per Phase A/B | 9± 20%               |
| Holding Torque           | 620g-cm Min          |
| Detent Torque            | 95 g-cm Max          |
| Insulation Resistance    | 100MΩ min.           |

## DIMENSIONS



| CONNECTOR PIN LOCATION |        |                                       |    |    |    |           |
|------------------------|--------|---------------------------------------|----|----|----|-----------|
| PIN NO.                | COLOR  | CCW ← → CW<br>(Seen from flange side) |    |    |    | PHASE     |
| 1                      | BLACK  | ON                                    |    | ON | ON | A         |
| 2                      | BROWN  |                                       | ON | ON |    | $\bar{A}$ |
| 3                      | ORANGE | ON                                    | ON |    | ON | B         |
| 4                      | YELLOW |                                       |    | ON | ON | $\bar{B}$ |

## PERFORMANCE CURVE



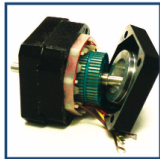
## OPERATING CONDITIONS

|                       |             |
|-----------------------|-------------|
| Operating Temperature | -20C - +50C |
| Operating Humidity    | 15 - 85% RH |
| Storage Temperature   | -30C - +70  |
| Storage Humidity      | 15 - 85% RH |

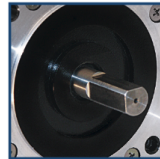
## MECHANICAL SPECIFICATIONS

|                      |                                    |
|----------------------|------------------------------------|
| Radial Shaft Loading | 7.5N Max                           |
| Axial Shaft Loading  | 1N Max                             |
| Radial Shaft Play    | 0.05 mm Max                        |
| Axial Shaft Play     | 0.6 mm Max                         |
| Mass                 | Approximate 90g                    |
| Rotor Inertia        | Approximate 4.65 g-cm <sup>2</sup> |

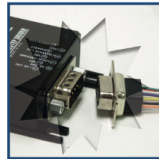
## OPERATION & USAGE TIPS



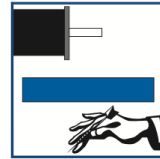
**Do not** disassemble motors; a significant reduction in motor performance will occur.



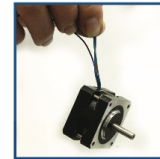
**Do not** machine shafts; this will have a negative effect on shaft run out and perpendicularity.



**Do not** disconnect motor from drive while in operation.



**Do not** use holding torque/detent torque of motor as a fail safe brake.



**Do not** hold motor by lead wires.



**Do not** exceed the rated current; this will burn the motor.

FAILURE TO COMPLY WITH THESE RECOMMENDATIONS WILL VOID ALL WARRANTY TERMS

## RECOMMENDED



Microstepping Driver  
**R208**



Single Axis Controller  
+ Driver  
**R256-RO**

# Motion Control, **Solved.**

## MOTOR ENGINEERING & MANUFACTURING



Optimized  
For Your  
Application



Quick  
Prototype  
Turnaround



Small Batch  
to OEM Volume  
Production



US Based  
Support &  
Manufacturing