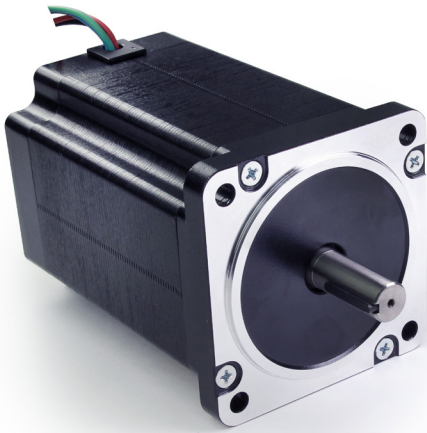
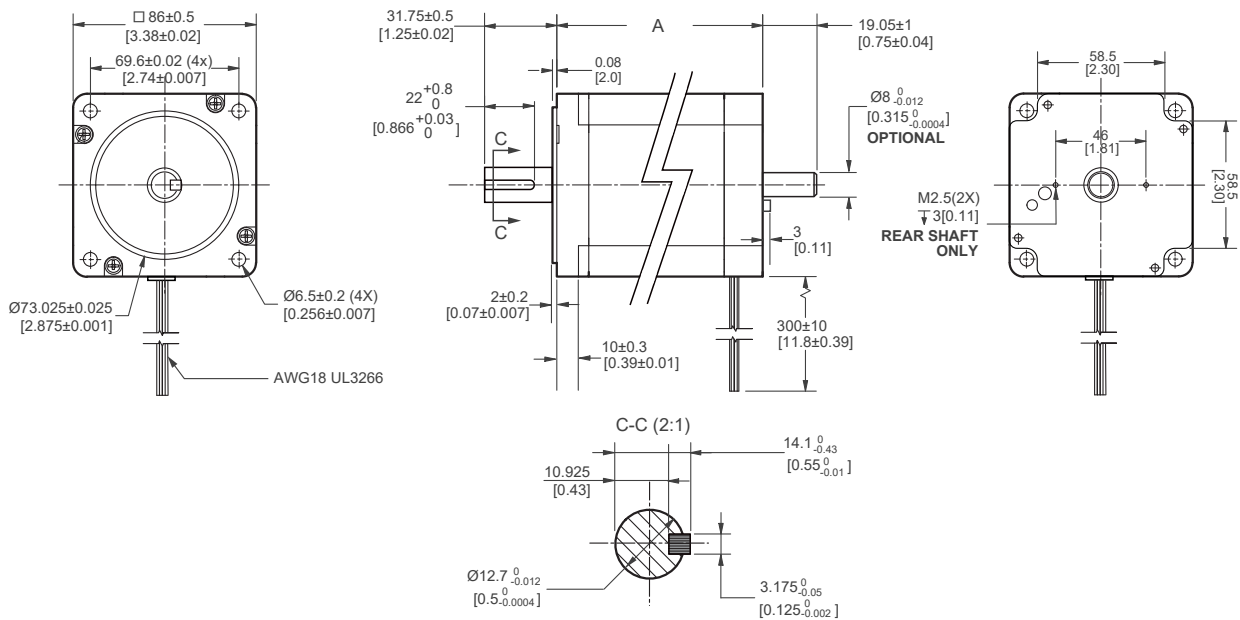


## MOTOR SPECIFICATIONS



Part Number	<b>X8718-126-35</b>
Step Angle	1.8°
Frame Size (mm/in)	86.00/3.390
"A" Body Length (mm/in)	125.50/4.940
Current (Amps/Phase)	3.5
Holding Torque (oz-in/Nm)	1741.83/12.3
Resistance (Ohms/Phase)	1.44
Rotor Inertia (g-cm <sup>2</sup> / oz-in <sup>2</sup> )	2200/12.03
Number of Leads	4
Connection	Bipolar
Weight (lbs/kg)	8.38/3.80

## DIMENSIONS



## PERFORMANCE CURVE

**X8718-126-35**  
 48 VDC, 3.5 AMP, 1/2 stepping

